



- RFTA'S BIGGEST CHALLENGES:**
- ✗ An aging fleet that is unable to keep up with growing demand
  - ✗ Unable to meet the demand for evening and weekend service
  - ✗ Unable to provide more off-season services
  - ✗ Lack of parking at stops and stations
  - ✗ Maintaining the Rio Grande Trail for cyclist and pedestrians
  - ✗ Building new regional trails
  - ✗ Providing safe pedestrian access to bus stations and trails

Presort Std.  
US Postage  
**PAID**  
CPC Mail

0051 Service Center Drive  
Aspen, CO 81611

## WHY IS RFTA DOING THIS?



Population, employment growth and housing development in the region will continue to increase over the next 20 years.



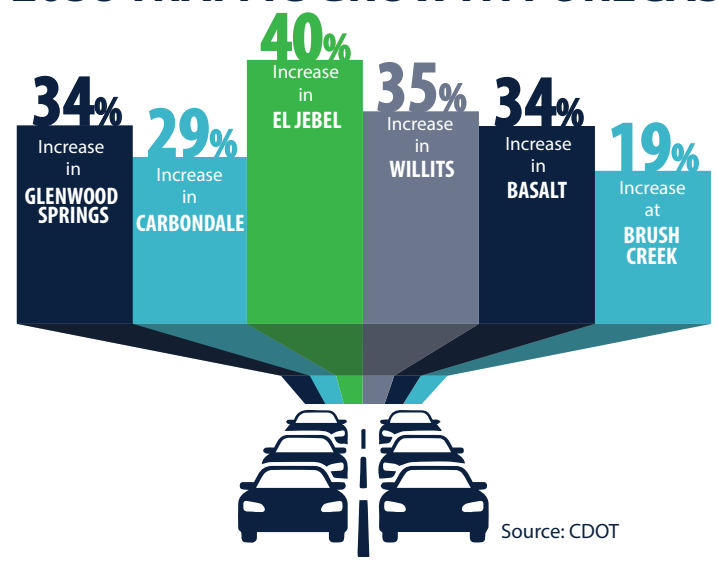
Increasing multi-modal transportation options will help the region address expected traffic demand and congestion increases.



New technology for traffic management and electric buses can help meet the community's environmental goals.

- RFTA DESTINATION 2040 PROPOSES TO:**
- ✚ Replace the bus fleet, including electric zero-emission buses
  - ✚ Provide more evening, night and weekend services
  - ✚ Increase service levels throughout the Roaring Fork and Colorado River valleys
  - ✚ Expand parking options at stations and stops
  - ✚ Continue to maintain and enhance the Rio Grande Trail
  - ✚ Help construct the LOVA trail
  - ✚ Expand and enhance major pedestrian crossings in the Roaring Fork Valley

## STATE HIGHWAY 82 2038 TRAFFIC GROWTH FORECAST



Please Review: Important information about regional transportation and transit

9.3

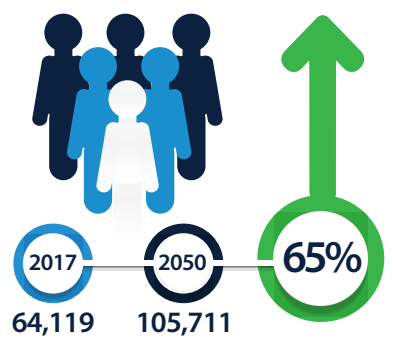
**YEARS**  
Current average RFTA bus age. Buses should be replaced at 12 years.

402,000

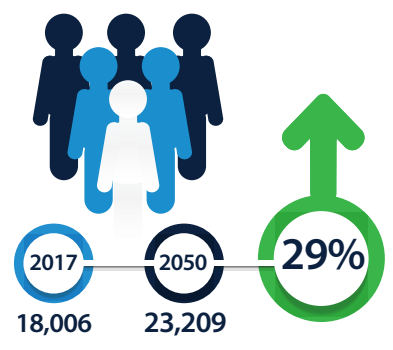
**MILES**  
Current average mileage on RFTA buses. Buses should be replaced at 500,000 miles.

## POPULATION GROWTH FORECAST

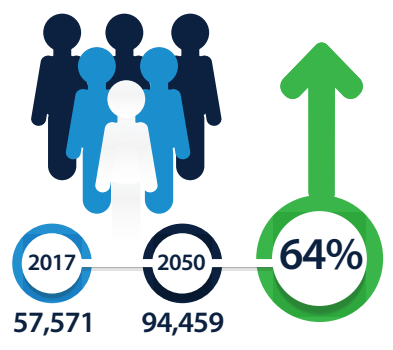
### GARFIELD COUNTY



### PITKIN COUNTY



### EAGLE COUNTY



**PUBLIC HEARING**  
AUGUST 9, 2018  
CARBONDALE TOWN HALL  
9:00AM

"Destination 2040" is the Roaring Fork Transportation Authority's (RFTA's) plan to address the region's current and future mobility needs. RFTA makes getting around the area easier and less expensive through the programs and services it provides, including: VelociRFTA Bus Rapid Transit, local buses, pedestrian safety enhancements, access to bike share, and maintenance of the Rio Grande recreational trail. RFTA helps reduce automobile congestion and is good for the environment, however, it faces financial challenges in order to maintain its services and programs, as well as to meet the region's growing mobility needs. That is why in November 2018 the RFTA Board of Directors is considering asking the public to approve a mill levy increase between 2 and 4 mills. The RFTA Board wants your input so that it can determine which elements of the "Destination 2040" plan are the most important to you. For this reason, a Public Hearing has been scheduled on August 9, 2018 at Town Hall, 511 Colorado Avenue, Carbondale, CO, 81627 and you are invited to attend. You can find information about Destination 2040 at [www.rfta2040.com](http://www.rfta2040.com) and, instead of attending the Public Hearing, you can send your questions and comments to [info@rfta2040.com](mailto:info@rfta2040.com). Thank you!



Questions or Comments?  
[info@rfta2040.com](mailto:info@rfta2040.com)

[www.RFTA2040.com](http://www.RFTA2040.com)

For more information visit [www.RFTA2040.com](http://www.RFTA2040.com)



# PROPOSED IMPROVEMENTS

- ### IMPROVEMENTS FOR REDUCING CONGESTION AND IMPROVING MOBILITY
- C1** Service Increase, 30-minute Valley Service
  - C2** Bus Fleet Expansion for New Services
  - C3** Service Increase, Weekend BRT (Spring/Fall)
  - C4** I-70 Grand Hogback Service - 27th Street to New Castle, 30 min headways
  - C5** Extend BRT to Downtown GWS and RFTA Local Service on Hwy 6/24
  - C6** Better transit service connections to Snowmass Village on Brush Creek Road
  - C7** Improvements to Mid Valley Hwy 82 Bus Stops
  - P C8** Glenwood Springs 27th Street BRT Station Parking Expansion
  - P C9** Willits BRT Station Parking Expansion
  - P C10** Carbondale BRT Station Parking Expansion
  - P C11** Aspen Junction (Basalt) Park and Ride Expansion
  - P C12** New Castle Parking Expansion
  - C13** Improvements to Town of Snowmass Village Transit Center \*
  - P C14** Upper Valley Congestion Management Study
  - P C15** Buttermilk Parking Management
  - C16** BRT Enhancements to Brush Creek Intercept Lot
  - C17** Pick Up/Drop Off Accommodations at BRT Stations

- ### IMPROVEMENTS FOR SUSTAINABILITY AND SAFETY
- S1** Pedestrian Crossings of 27th Street and Highway 82 in Glenwood Springs \*
  - S2** South Bridge Highway 82 Connection in Glenwood Springs \*
  - S3** Pedestrian Crossing at 23rd Street in Glenwood Springs \*
  - S4** Buttermilk Pedestrian Crossing in Pitkin County \*
  - S5** Enhanced Crossing of Rio Grande Trail at 14th Street in Glenwood Springs
  - S6** Aspen Maintenance Facility Expansion
  - S7** RFTA Glenwood Springs Maintenance Facility Expansion
  - S8** 900 Block Grand Avenue In-Line Transit Stations in Glenwood Springs
  - S9** New Transit Station in Glenwood Springs \*
  - S10** Replacement and Expansion of Employee Housing and Carbondale Office Space

- ### IMPROVEMENTS FOR THE ENVIRONMENT
- E1** Bus Replacement (Electric, CNG, Clean Diesel)
  - E2** Bike Share Expansion
  - E3** Real Time Traveler Information
  - E4** LOVA Trail Construction from Glenwood Springs to New Castle \*
  - E5** Rio Grande Trail Maintenance and Improvements

### LEGEND

\* Partial RFTA contribution to overall project

Transit Improvement	Trail Improvement	<b>ROUTES/TRAILS</b>	Hogback Route
Parking Improvement	Pedestrian Crossing Improvement	BRT Route	Snowmass Route
Station Improvement	Building Improvement	Valley Route	Rio Grande Trail

